



**Be the champion
patients and
communities need.**



**This is a medical school for the doctor you
want to be. And more.**





When I first heard that Kaiser Permanente was starting a medical school, I thought it made perfect sense. I could immediately see the potential of a school embedded in our nation's leading integrated healthcare system, with its focus on team-based care, population health, technological innovation, and continuous quality improvement. It was clear that this school would make a major contribution to medical education, to healthcare, and, ultimately, to health. Two years later, I was extremely fortunate to have the opportunity to join the school.

My enthusiasm was shared by many others who have come on board as senior leaders, faculty, and staff, often leaving behind key positions around the country. What drives all of us at the school is the opportunity to draw on evidence-based educational approaches from across the globe to provide our students with an outstanding experience.

Our graduates will be excellent clinicians in every field of medicine, wherever they choose to make their careers. They will practice person-centered care, appreciate the many social factors that influence health, and seek to understand and meet the needs of people from diverse backgrounds. They will be lifelong learners who assess new evidence and new technology and adapt to a changing healthcare landscape. And they will serve as advocates for their patients' overall well-being—in homes, schools, workplaces, and communities.

Thank you for taking the time to learn more about our school.

Mark A. Schuster, MD, PhD
Founding Dean and CEO
Kaiser Permanente Bernard J. Tyson School of Medicine

An open, mindfully designed environment for learning.

We're building a new medical school from the ground up, designed to promote a dynamic exchange of ideas, use of cutting-edge technology, and student well-being. Located in Pasadena, California, our school's home has everything you need to thrive academically and personally.

Key Features

Simulation Center, where our physicians will guide you in practicing clinical skills to gain experience and confidence when you're with a patient.



Anatomy Resource Center, where we're replacing traditional cadaver dissection with augmented reality, plastination, and imaging to make anatomy more clinically relevant. (See pg. 18.)



Rooftop garden equipped with a yoga studio, meditation garden, fitness center, and teaching kitchen—all to help you maintain a healthy balance.



Informal gathering spaces for idea sharing and community building, as well as collaboration and team learning.



Flexible classrooms designed for group-based problem solving, interactive learning, and digital collaboration.





HARVARD PERMANENTE
BERNARD J. TYSON
SCHOOL OF MEDICINE

Learn from the leaders in team-based, person-centered care.

Founded about 75 years ago on the belief that good health can be accessible and affordable for all, Kaiser Permanente is now the nation's largest integrated health system and one of the world's highest-performing healthcare organizations.

Kaiser Permanente is committed to innovative care models.

It was one of the first adopters of the electronic health record. It's a leader in reducing deaths from heart disease and stroke; in eliminating disparities between white and black Medicare beneficiaries in colon cancer and cardiovascular disease; and in delivering transgender care, having developed the nation's first integrated transgender care model. And because good health is influenced by factors beyond the clinic, Kaiser Permanente connects providers and community partners to support healthier neighborhoods.

Kaiser Permanente medical offices and hospitals

offer you dynamic learning environments. Primary care physicians consult in real time with specialists, care teams jointly address each patient's individual needs, and systems are in place to follow patients over time. You can also connect to Kaiser Permanente researchers and scientists on our faculty to explore a variety of scholarly interests.

What you learn here readies you for wherever your career takes you—clinical medicine, research, advocacy, policy, and more.



Continuing a legacy of equitable care.

Our school is named for Bernard J. Tyson (1959–2019), who served as CEO of Kaiser Permanente, capping a 30-year career in the organization. A healthcare visionary, Bernard reveled in our school’s creation. He championed the importance of addressing the community factors that influence health and believed deeply in a physician’s role in advocating for their patient’s health in all settings.



Other degree opportunities.

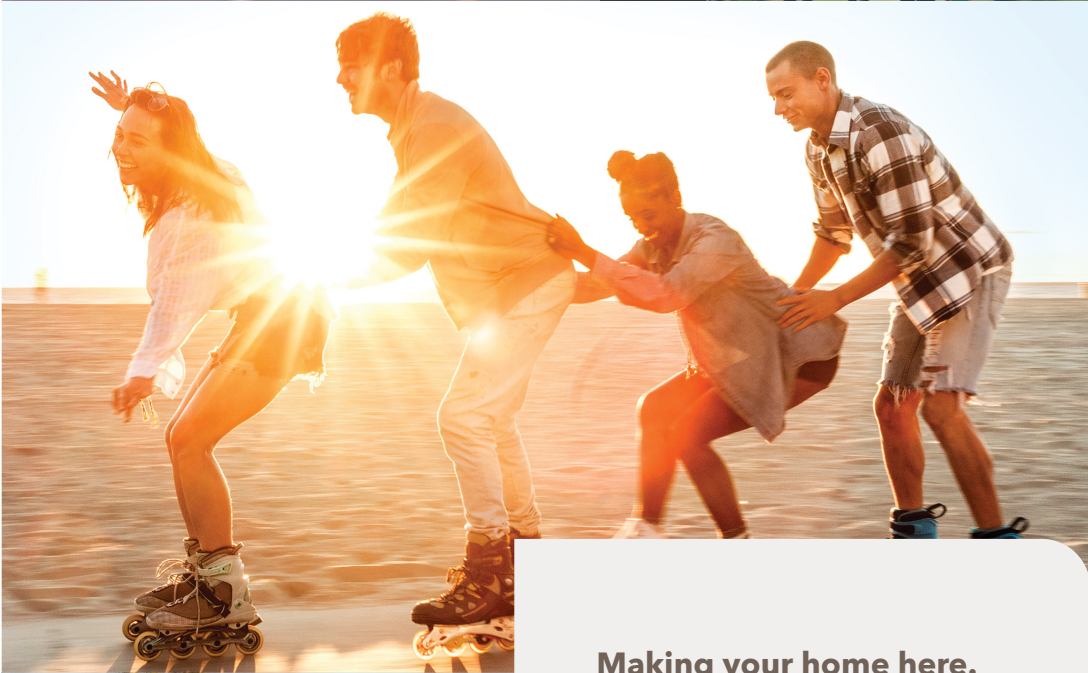
We're proud to offer additional educational opportunities with other institutions that make our region an education and research hub.

- Caltech: MD/PhD
- Stanford MS in Clinical Informatics Management
- UCLA: MD/Master of Public Health
- USC: MD/Master of Health Administration

Learn in a microcosm of America.

Our school is in Southern California, where half the state's population lives, and in a county where 60 percent of residents speak a language other than English.

This environment reflects the changing demographics, diverse opportunities, and multifaceted healthcare issues of emerging America. You'll also be close to an array of healthcare settings, from large research hospitals to community-based clinics.



Making your home here.

There are plenty of ways within easy reach to enjoy your downtime. For cyclists, there are paths along palm tree-lined streets; for hikers, nearby parks and foothills. We're less than two hours from ski slopes, one hour from the beach, and 20 minutes from downtown Los Angeles, a global arts and food destination.



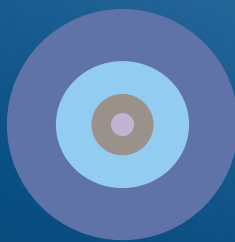
Understanding patients and their care from the cellular to the societal level: a cohesive, integrated framework.

Throughout all four years, your education develops your medical knowledge and clinical skills simultaneously. You'll continue to explore topics in new settings and contexts.



YEAR 1

- Integrated Sciences
- Longitudinal Integrated Clerkship
- Reflection, Education, Assessment, Coaching, and Health and well-being (REACH)
- Service-Learning[†]



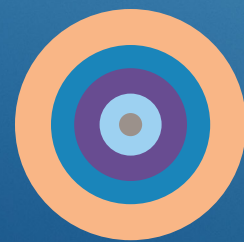
YEAR 2

- Longitudinal Integrated Clerkship
- Integrated Sciences
- Reflection, Education, Assessment, Coaching, and Health and well-being (REACH)
- Service-Learning[†]



YEAR 3

- Required Clinical Experiences
- Electives (Clinical or Non-Clinical)
- Required Non-Clinical Experiences (HSS Selectives)^{††}
- Integrated Sciences
- Reflection, Education, Assessment, Coaching, and Health and well-being (REACH)



YEAR 4

- Electives (Clinical or Non-Clinical)
- Required Clinical Experiences
- Required Non-Clinical Experiences (HSS Selectives)^{††}
- Integrated Sciences
- Reflection, Education, Assessment, Coaching, and Health and well-being (REACH)

[†]See pg. 22. ^{††}Health systems science electives and the required scholarly project.

The next generation of leaders in medicine needs to understand patients as individuals—not as the sum of their symptoms.

So instead of a traditional approach—lectures in biomedical sciences for the first two years, clinical sciences in the third and fourth years—we've made health systems sciences a co-equal third pillar of our curriculum and integrated the three disciplines throughout all four years of study.

We've drawn from global best practices in medical education, and added some new approaches of our own. Your education will prioritize active learning and explore healthcare's deep personal and societal challenges—empowering you to be a catalyst of change.

Your four-year journey.

(For the Class of 2027 as of 06/19/23. Please check back periodically for additional updates.)

JULY AUGUST SEPTEMBER OCTOBER NOVEMBER DECEMBER

Year 1

SEMESTER 1					
Early Immersive Experience	Integrated Sciences (IS) 1 Fundamentals	REACH	IS 1 Gastrointestinal, Endocrinologic, Metabolic, Genitourinary, Reproduction	REACH	2 Weeks Vacation
	Longitudinal Integrated Clerkship (LIC) 1A, (FM/IM) [†]		LIC 1A (FM/IM)		
	Service-Learning		Service-Learning		

[†]FM=Family Medicine and IM=Internal Medicine

Year 2

SEMESTER 1					
2 Weeks Vacation	Inpatient Immersion	REACH	IS 3	REACH	2 Weeks Vacation
	Core Clerkships (CC) ^{††}		CC		
	Service-Learning (SL)		SL		

^{††}Core Clerkships include Emergency Medicine, Family Medicine/Internal Medicine, Obstetrics & Gynecology, Pediatrics, Psychiatry, and Surgery

Year 3

SEMESTER 1					
Step 1 Prep (4 Weeks ^{†††})	2 Weeks Vacation ^{****}	Advanced Clinical Knowledge Training (ACKT) ^{††††}	Required Clinical Experiences & Elective Clinical Experiences (RCE/ECE) [*]	REACH	RCE/ECE
			Integrated Sciences (IS) 5 ^{**}		IS 5
			Non-Clinical Experiences (NCE) ^{***}		NCE
					2 Weeks Vacation ^{****}

^{†††}Students take USMLE Step 1 before January in Year 3.

^{*}Years 3 and 4 have 18 weeks of required clinical experiences: 4 weeks Advanced Medicine Selective, 4 weeks Advanced Selective (student's preference), 4 weeks Critical Care Selective, 4 weeks Community Medicine Selective, and 2 weeks Neurology Rotation.

Year 4

SEMESTER 1					
Required Clinical Experiences & Elective Clinical Experiences (RCE/ECE)					2 Weeks Vacation ^{****}
Integrated Sciences (IS) 6					
Non-Clinical Experiences (NCE)					

^{††††}ACKT is a USMLE Step 2 CK preparation course. Students take Step 2 CK before April in Year 3.

REQUIRED SCHOLARLY PROJECT

(Conducted anytime during Years 1-3)

THE INTEGRATED SCIENCES COURSES INCLUDE:

- Biomedical Science
- Clinical Science
- Health Systems Science

4-YEAR LONGITUDINAL THREADS:

- Advocacy and Leadership
- Equity, Inclusion, and Diversity
- Health Promotion
- Interprofessional Collaboration

JANUARY	FEBRUARY	MARCH	APRIL	MAY	JUNE	JULY
---------	----------	-------	-------	-----	------	------

SEMESTER 2									
IS 2 Renal, Cardiovascular, and Pulmonary	REACH	IS 2 Hematology, Oncology, Immunology, Infectious Disease, and Musculoskeletal	1 Week Vacation	IS 2 Musculoskeletal, Dermatologic, Mind, and Nervous System	REACH	4 Weeks Vacation			
							LIC 1B (FM/IM)	LIC 1B (FM/IM)	LIC 1B (FM/IM)
							Service-Learning	Service-Learning	Service-Learning

SEMESTER 2											
Inpatient Immersion	REACH	IS 3	IS 4	Inpatient Immersion	IS 4	1 Week Vacation					
							REACH	IS 4	IS 4	REACH	Step 1 Prep (2 Weeks)
SL	SL	SL	SL								

SEMESTER 2										
IS 5	REACH	RCE/ECE	REACH	IS 5	RCE/ECE	IS 5				
							REACH	IS 5	RCE/ECE	IS 5

**In Years 3 and 4, the Integrated Sciences courses will include intermittent weeks back on campus. Students will analyze cases, hone clinical skills, and learn advanced biomedical, clinical, and health systems sciences content relevant to both the USMLE Step 2 Exam and becoming an excellent physician.

***Consists of 8 total weeks of HSS electives in Years 3 and 4 (including community engagement opportunities) and 4 weeks of scholarly project in Year 3.

****8 weeks of floating vacation in addition to scheduled Winter Breaks.

SEMESTER 2										
RCE/ECE	IS 6	REACH	RCE/ECE	IS 6	REACH	Residency Immersive				
							IS 6	RCE/ECE	IS 6	REACH

Graduation & Residency





Health systems science puts patient health in context.

Imagine a doctor and patient in an exam room. For a long time, this relationship has been treated as the entirety of the care experience—diagnose, treat, and part ways.

But in reality, the doctor-patient relationship involves far more than two people. Doctors are part of care teams, hospitals, and other complex delivery and insurance systems. Patients are also part of systems: families, workplaces, schools, and communities. Meanwhile, public and private institutions at every level affect both doctors and patients through

policies, justice, infrastructure, economic environments, and more.

Effective medicine takes all these systems into account. That's why health systems science is the essential third pillar of our curriculum. You'll understand health beyond patients' individual biology and clinical experiences, and gain a new appreciation for the roles you can play in addressing broader health issues. You'll be equipped to build holistic relationships with your patients—beyond responding to the symptoms they show in a single visit.

Medical education designed for the way you learn.

Engage more deeply with flipped classrooms.

Before class, you'll explore case materials, videos, podcasts, quizzes, and other interactive materials to build a foundation for understanding. Then, you'll spend class time in small groups evaluating patient cases. Faculty will team-teach key coursework and help facilitate your learning.

Dive into research with the Scholarly Project.

You will undertake a scholarly project—health services research, quality improvement, biomedical science research, etc.—with guidance from our researchers, clinicians, and community partners. The project is also an opportunity to evaluate the attributes of high-quality research, including the design of studies, data adequacy, and analytic approaches. This will help you use evidence more effectively in the future.

Learn from specific, relevant patient care scenarios.

Our case-based curriculum teaches key concepts in the context of patient stories based on real-life situations. Instead of trying to absorb information in isolation, you'll immediately see the connections between symptoms, family history, relationships, and community.

Moving forward, circling back.

The study of medicine and health should be an iterative process, with each new concept building on those that came before. To that end, your studies will take a spiral approach: one where key concepts reappear over time with ever-increasing sophistication and depth. By continually reinforcing, building, and expanding on what you've already learned in your integrated sciences class and at your clerkships, you'll be able to reflect and come back with deeper insights.



A more relevant approach to anatomy.

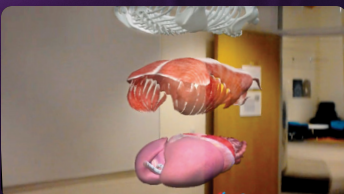
What if anatomy class could immerse you in all the dynamism and complexity of the human body? Augmented reality, along with imaging and other interactive tools, now make it possible—which is why they will be at the heart of our Anatomy Resource Center.

This is anatomy beyond cadavers—and it's a more compelling way to learn.

For centuries, cadaver dissection has been the staple for learning anatomical structures—and a meaningful milestone for first-year medical students. But there's growing

evidence that a tech-enabled approach helps you master concepts of gross anatomy faster and retain information just as effectively. You'll better understand how disease states evolve and how to manage them.

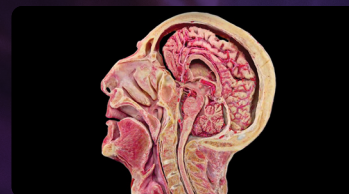
The knowledge you gain will be immediately transferable to the patients you'll encounter in your clinical clerkships, and it will serve as a strong foundation for exploring these structures more fully in your surgery-focused clerkships.



You'll be able to virtually dissect, magnify, and examine organs and tissues, as well as explore dynamic functional relationships and make correlations with diagnostic imaging modalities.




You'll better understand how disease states evolve in real time and how to manage them.



You'll gain hands-on experience with a comprehensive collection of predissected human cadavers and prosections preserved by plastination.

Image courtesy of Gubener Plastinate/von Hagens Plastination



**Broaden your
clinical experience.**

During the first two years, your clerkships will be at one of six Kaiser Permanente medical centers in Southern California, each serving different populations.

- Downey Medical Center
- Los Angeles Medical Center
- Panorama City Medical Center
- San Bernardino County Medical Center
- South Bay Medical Center
- West Los Angeles Medical Center

In your third and fourth years, sub-internships and electives can take you to centers across Southern California or around the country.

See more at medschool.kp.org/education/curriculum.



Start working with patients right away.

Your Longitudinal Integrated Clerkship (LIC) is much more than shadowing—and it means you don't have to wait long to start interacting with patients. Our program places you in a family medicine or an internal medicine outpatient clinic almost right away. You'll work under the guidance of a Kaiser Permanente physician-preceptor, helping a team of providers—nurses, pharmacists, social workers, and others—care for a panel of patients.

The two-year clerkship lets you build relationships with real patients over time. Through your interactions with your

preceptor's healthcare team, you'll also experience the flow of a medical practice and how interprofessional communication enables safer, more effective care.

You'll put to use what you learn almost as soon as you learn it, and your physician-preceptor will guide you every step of the way. By the time you finish your studies, you'll have four full years of experience working with patients and applying your medical knowledge holistically. Those skills will make you a more effective physician in any healthcare setting.



The community in the school, and the school in the community.

We now know how much social factors influence health: our ZIP code often has a bigger impact than our genetic code in determining quality of life.

A two-year immersive experience at a community health center is at the heart of your community-engaged experience. Whether your service-learning goal is helping to reduce language barriers, encouraging preventive care, or addressing another

systemic issue, you'll collaborate with community care problem solvers in eliminating health disparities.

You'll work within communities across Southern California to learn about the realities of patients' daily lives. As you listen to and learn from our neighbors, you'll understand what it takes to be a change agent in the clinical setting and beyond.



KAISER PERMANENTE
BERNARD J. TYSON
SCHOOL OF MEDICINE



Your entire self is welcome here.

We're creating a community of faculty and students that reflects the diversity of America—and embraces the courageous conversations this diversity engenders.

You'll learn alongside people whose life stories and journeys to medicine vary widely. No two people will have the same combination of identities, beliefs, experiences, and perspectives. But you'll share the desire to become exceptional physicians, lifelong learners, and leaders of change.

Through collaboration and small-group learning, you'll build strong ties—preparing you to connect authentically with colleagues and patients of all backgrounds.





A holistic approach to well-being.

Our school was designed with your well-being in mind. The REACH course will provide you with the time and space to explore and develop resilience skills. Our building includes space for yoga, guided meditation, and other amenities for a well-balanced life. And mental health counseling and academic support will be available whenever you need them.



Your well-being is our priority.

We believe medical school should support your well-being and strengthen your well-being skills, both during your training and for the rest of your career. Our answer is a course called REACH (Reflection, Education, Assessment, Coaching, and Health and well-being).

You'll be paired with a physician-coach who will help you identify strengths and gaps, set goals, and track progress. You'll meet at regular intervals one-on-one and in a dedicated small group across all four years of medical school. You'll spend time during REACH weeks in self-reflection with guidance from your physician-coach.

Taking care of yourself will allow you to take better care of your patients. You'll further your resilience and lifelong learning skills so you can become the transformative leader healthcare needs. REACH is here to help you develop these skills, including work-life integration, both now and in the future.

Our application process.

We know applying to medical school demands a lot of your time and attention, so we want to make it as easy as possible for you to know what's required.

Phase 1: Primary Application

The primary application is your first formal chance to connect with us and demonstrate interest. You'll need to send:

- MCAT scores
- The American Medical College Application Service (AMCAS) Application
- 3-6 letters of recommendation

Phase 2: Secondary Application

If you're eligible, we'll invite you to complete a more detailed secondary application.

Phase 3: Interviews

The interview is our chance to get to know you during the application and selection process. Invited applicants will participate in a multiple mini-interview (MMI), as well as a traditional one-on-one interview with a faculty member.

Phase 4: Admission Decisions

We extend offers of admission on a rolling basis. You'll be able to reserve your spot at our school and one other institution while you consider your options.

Phase 5: Second-Look Weekend

If you are accepted, you will be invited to Pasadena to meet with faculty, deans, and future classmates—and to decide whether our school is the right fit for you.

For complete application details and timeline, visit us at: medschool.kp.org/admissions.

To learn more about our current status in the accreditation process, please visit medschool.kp.org/about/accreditation.

WE ARE TUITION-FREE FOR OUR FIRST FIVE CLASSES.

We know that medical school debt is a major concern for many students. To minimize it for our graduates, all classes entering the summer of 2020 through the summer of 2024 will pay **zero tuition**.



 **KAISER PERMANENTE
BERNARD J. TYSON
SCHOOL OF MEDICINE**

98 South Los Robles Ave.
Pasadena, CA 91101 USA
888-KPMED4U (888-576-3348)

medschool.kp.org

20221006